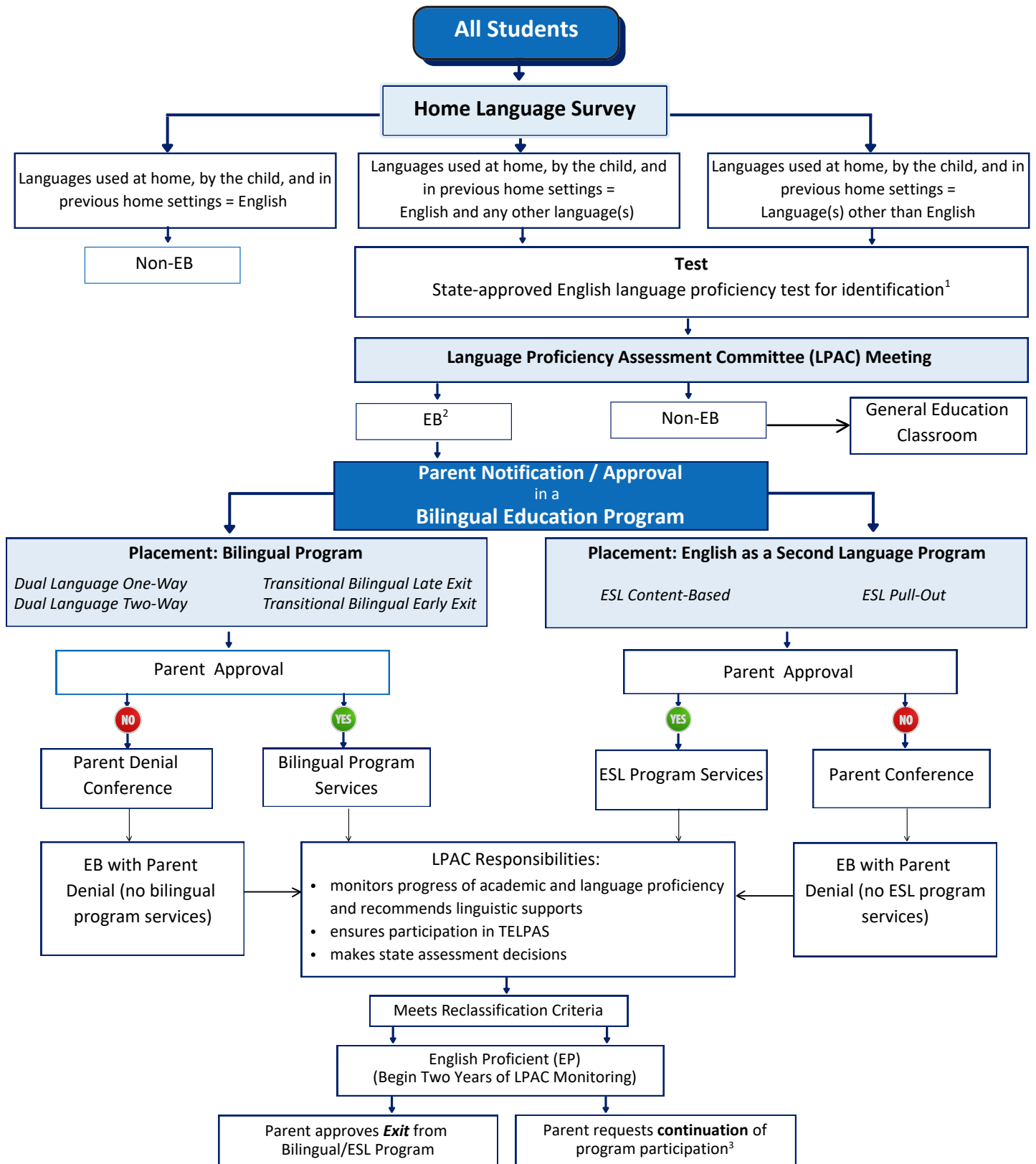


## Emergent Bilingual (EB) Identification/Reclassification Flowchart



<sup>1</sup> Pre-K–1st: State-approved English language proficiency test (listening and speaking) below English proficient level = EB

2nd–12th: State-approved English language proficiency test (listening, speaking, reading, and writing) below English proficient level = EB

<sup>2</sup> The terms English learner (EL) and emergent bilingual (EB) student are used interchangeably.

<sup>3</sup> While a student can continue in the ESL and Transitional Bilingual programs after reclassification, only students participating in a two-way dual language immersion program will generate funding after reclassification.

## Emergent Bilingual (EB) Student Decision Chart for the Language Proficiency Assessment Committee (LPAC)

### Emergent Bilingual (EB) Student Decision Chart for the Language Proficiency Assessment Committee (LPAC)

#### Accessible Version

*The flowchart of decisions made to identify, place, reclassify, and monitor emergent bilingual students is described below for accessibility purposes.*

#### Home Language Survey and Assessment

Upon a student's initial enrollment in Texas public schools, a TEA required Home Language Survey (HLS) is administered, asking three questions about what languages are spoken in the home, by the student, and in any previous home environments.

- If the languages used at home, by the child, and in any previous home setting (if applicable) are indicated as English; the child is Non-EB. The student will not receive bilingual or English as a second language (ESL) services.
- If the languages spoken at home, by the child, and in any previous home setting (if applicable) are indicated as English and another language or the language spoken at home, by the child, and in any previous home setting (if applicable) are indicated as languages other than English; the student will be assessed for **English proficiency**.
  - If the English proficiency test identifies the child as Non-EB, they will be placed in a **General Education Classroom**.
  - If the English proficiency test identifies the child as an **Emergent Bilingual (EB) student**, they will be placed in the **Bilingual Program** or the **English as a Second Language Program**.

#### Parent Notification / Approval in a Bilingual Education Program

- **Placement: Bilingual Program**
  - Dual Language One-Way
  - Dual Language Two-Way
  - Transitional Bilingual Late Exit
  - Transitional Bilingual Early Exit
- **Parent Approval: Bilingual Program**
  - If the parent **does not approve placement in a Bilingual Program**, a **Parent Denial Conference** will be held. If, after the conference, the parent still does not approve placement, the child will be categorized as EB with Parent Denial, and will not receive bilingual program services.
  - If the parent **approves placement in a Bilingual Program**, the child will be placed in a Bilingual Program.
  - Regardless of parent approval of a bilingual program placement, the LPAC:
    - monitors progress of academic and language proficiency and recommends linguistic supports
    - ensures participation in TELPAS, and
    - makes state assessment decisions.
- **Placement: English as a Second Language Program**
  - ESL Content-Based
  - ESL Pull-Out

- **Parent Approval: English as a Second Language Program**

- If the parent **does not approve placement in an ESL Program**, a **Parent Conference** will be held. If, after the conference, the parent still does not approve placement, the child will be categorized as EB with Parent Denial, and will not receive ESL program services.
- If the parent **approves placement in an ESL Program**, the child will be placed in an ESL Program.
- Regardless of parent approval of a bilingual program placement, the LPAC:
  - monitors progress of academic and language proficiency and recommends linguistic supports
  - participation in TELPAS, and
  - makes state assessment decisions.

The LPAC will monitor the child to ensure continued program eligibility. The child will continue in the Bilingual or ESL Program until they meet reclassification criteria at which time they will be reclassified as English Proficient (EP) and a two-year monitoring period will begin. **After reclassification**, the parent may then either:

- **approve the child's Exit** from the Bilingual/ESL Program, or
- **request continuation** of program participation.