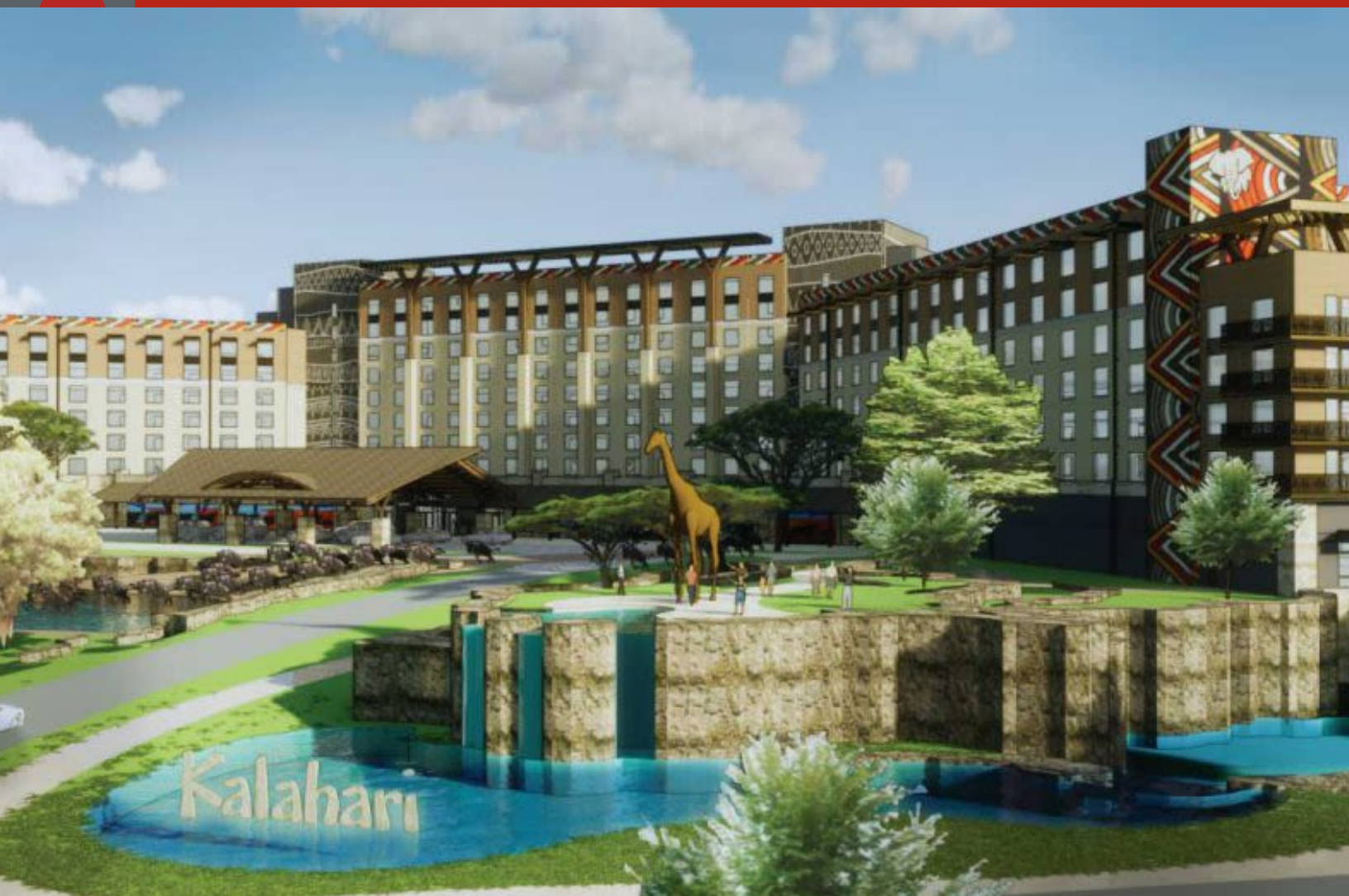


2024 TITLE III SYMPOSIUM

United **WE THRIVE**

Celebrating and Supporting Emergent Bilingual Students' Excellence

2024 Hotel Guidebook



Kalahari Resorts & Conventions

\$259.00/night plus \$39.99 resort fee /night

[Booking link](#)

Payment Information

The Kalahari is an advance deposit hotel. To guarantee your reservation, Kalahari requires the room rate for the first night lodging be billed to a major credit card at the time of reservation. Taxes and resort fee (if applicable) will be charged at check in. The same credit card must be presented along with valid photo ID at time of check-in. At check in, a preauthorization will be held on the credit card for incidentals in the amount of \$100.

Group Instructions on Business Checks

Guests are required to mail the district/school/company check at minimum two (2) weeks prior to arrival (personal checks are not accepted). Checks are to be sent to Kalahari Round Rock (3001 Kalahari Blvd Round Rock, TX 78665), Attn: Maribeth Galarpe - Finance with reservation confirmation numbers, first/last name, and payment instructions. We welcome prepayment with Purchase Orders as well.



**Up to 4 guests per room.
Only one resort fee per room
per night. All guests will
have access to the resort.**



Letter of Authorization (LOA) and Tax Exempt

Kalahari Resorts & Conventions does not accept Letters of Authorization forms, Tax Exemption forms, or Purchase Orders at the hotel check-in. Kalahari has a dedicated team that approves these forms prior to arrival to guarantee validity and ensure billing is setup appropriately. These forms should be submitted no later than 7 days in advanced to Kalahari at dellscallcenterfax@kalahariresorts.com or fax them to (608) 254-6116. We highly suggest that attendees submit these forms at minimum two weeks in advanced prior to the hotel check in so Kalahari can process in a timely manner. Failure to follow this procedure may result in full room and tax charges to the attendees on their individual credit cards. If you have any questions, included is a link to the Kalahari website that outlines the general policies for the entire resort. ([Kalahari FAQs](#))

TAX POLICY

Please note the following taxes are not included into rates:

- \$39.99 Resort Fee Per Night.
- 6% State Tax Per Night.
- 9% City Tax Per Night.

CANCELLATION POLICY

Reservations canceled 72 hours or more prior to the date of arrival receive a refund of the deposit, minus a \$30 cancellation fee. Reservations canceled within 72 hours of the date of arrival forfeit the entire deposit of the first night's room and tax.

CHILD POLICY

Kids 0-2 don't count towards total gst count; 3-17 counts towards total room occupancy & are subject to extra gst fees.



HOTEL GUIDEBOOK

La Quinta Inn & Suites by Wyndham Round Rock East

3900 E Palm Valley Blvd
Round Rock, TX 78665
(737) 346-6652

1.1 miles to
Kalahari

Standard Room: \$95.00/night

Enjoy this charming city just outside of Austin with a comfortable stay at La Quinta Inn & Suites by Wyndham Round Rock near Kalahari. Off I-35 and 32 miles from Austin - Bergstrom International Airport (AUS), our contemporary, non-smoking hotel is minutes from Round Rock Express baseball games at Dell Diamond stadium, outdoor activities galore at Old Settlers Park, and Kalahari® water parks. You'll also have easy access to businesses like Dell and The University of Texas at Austin. Grab a bite at a local restaurant and relax with our pool and free WiFi. **Free Breakfast!**

Hotel Policies

CHECK IN 3:00 p.m.

CHECK OUT 11:00 a.m.

CHILDREN STAY FREE POLICY

Children 18 and under stay free.

SMOKING POLICY

This is a non-smoking hotel

PET POLICY

Service Animals - ADA-defined service animals are welcome free of charge. / Pets Allowed - 2 pets max. Cats and dogs only. 75lbs or less per pet. / Fees - Non-refundable 25 USD nightly for up to 2 pets. Max 75 USD per stay. / Other Information - Contact hotel for additional details and availability.

PARKING

Free onsite parking



HOTEL GUIDEBOOK

Holiday Inn Express & Suites Austin - Round Rock

2340 IH 35 North

Round Rock, TX 78681

(737) 203-8937

5.1 miles to
Kalahari

Standard Room: \$107.00/night

Escape the ordinary and stay with us at the Holiday Inn Express Hotel and Suites Austin and Round Rock. Prepare to explore Austin Round Rock with our Express Start Breakfast featuring a variety of breakfast items from healthy to indulgent. Smart, simple- travel is what we're all about. We're conveniently located near the Round Rock Sports Center, Dragon Stadium Round Rock, Dell Diamond, and Round Rock Multipurpose Complex. We closely neighbor Austin, Georgetown, Cedar Park, and Hutto. We make it easy for you to explore hot spots like 6th Street Austin, Rainey Street Austin, and the Domain Austin. Try world famous eats at Chuy's Tex Mex right next door, sample local brews and bites at Austin's Pinthouse Pizza, or for a more upscale experience, visit Salt Traders Coastal Cooking, Jack Allen's Kitchen, and Saltgrass Steakhouse - all within close reach. **Express Start Breakfast included!**

Hotel Policies

CHECK IN 3:00 p.m.

CHECK OUT 11:00 a.m.

CHILDREN STAY FREE POLICY

Children 18 and under stay free.

SMOKING POLICY

This is a non-smoking hotel

PET POLICY

Service animals allowed

PARKING

Free onsite parking



HOTEL GUIDEBOOK

Embassy Suites - Round Rock

270 Bass Pro Drive
Round Rock, TX 78665
(512) 308-3883

8.9 miles to
Kalahari

King Bed Studio Suite: \$149.00/night
2 Queen Beds/2 Room Suite: \$159.00/night
King 2 Room Suite: \$159.00/night

Next to Round Rock Premium Outlet Mall and I-35, our all-suite hotel is 23 miles north of Austin. Dell Diamond Stadium and Old Settler's Park are 15 minutes away. Ten minutes north, you'll find Inner Space Cavern. **Free made-to-order breakfast**, complimentary evening reception and free parking. Also available on-site: indoor pool, fitness center and pet friendly rooms.

Hotel Policies

CHECK IN 3:00 p.m.

CHECK OUT 11:00 a.m.

SMOKING POLICY

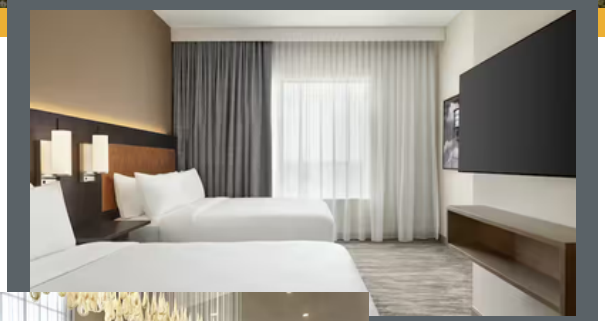
This is a non-smoking hotel

PET POLICY

Pet friendly

PARKING

- Self-parking: Complimentary
- Valet parking: Not available
- EV charging: Not available
- Secured: Not available
- Covered: Not available
- In/Out privileges: Not available



HOTEL GUIDEBOOK

5 miles to
Kalahari

Home2 Suites by Hilton Round Rock Medical Center

425 University Blvd, Building 2
Round Rock, TX 78665
(737) 910-9936

King Bed Studio Suite: \$107.00/night

Find us off I-35, less than a mile from Baylor, Scott & White Medical Center, ICU Medical, and several restaurants. The Premium Outlets Mall and Texas State University – Round Rock are within two miles. Round Rock Express Stadium is 15 minutes away. Enjoy our kitchenettes in each suite, **free breakfast**, meeting room, fitness center, and outdoor pool.

Hotel Policies

CHECK IN 3:00 p.m.

CHECK OUT 11:00 a.m.

SMOKING POLICY

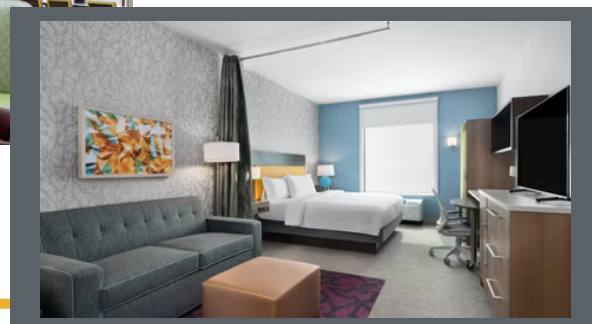
This is a non-smoking hotel

PET POLICY

Pet-friendly rooms

PARKING

Free on-site parking



HOTEL GUIDEBOOK

ALOFT AUSTIN ROUND ROCK

2951 Jazz Street

Round Rock, Texas, 78664

(512)218-5945

4.6 miles to
Kalahari

Standard King: \$104.00/night

Standard Double Queen: \$112.00/night

Move to your own beat at the bold, sleek, and unique Aloft Austin Round Rock. Urban meets the suburban in your loft style room that comes complete with an ultra-comfortable signature bed, walk-in shower with Dry Bar products, and never skip a beat with our smart spaces and plug and play connected rooms. Grab some sweet & savory snacks or a quick bite to eat at the onsite restaurant Re:Fuel by Aloft. Free coffee/tea. Breakfast is NOT included.

Hotel Policies

CHECK IN 3:00 p.m.

CHECK OUT 12:00 p.m.

SMOKING POLICY

This is a non-smoking hotel

PET POLICY

Pets Welcome

Nightly fee WILL NOT exceed \$150 per stay; Only Dogs Accepted; 40 pound max

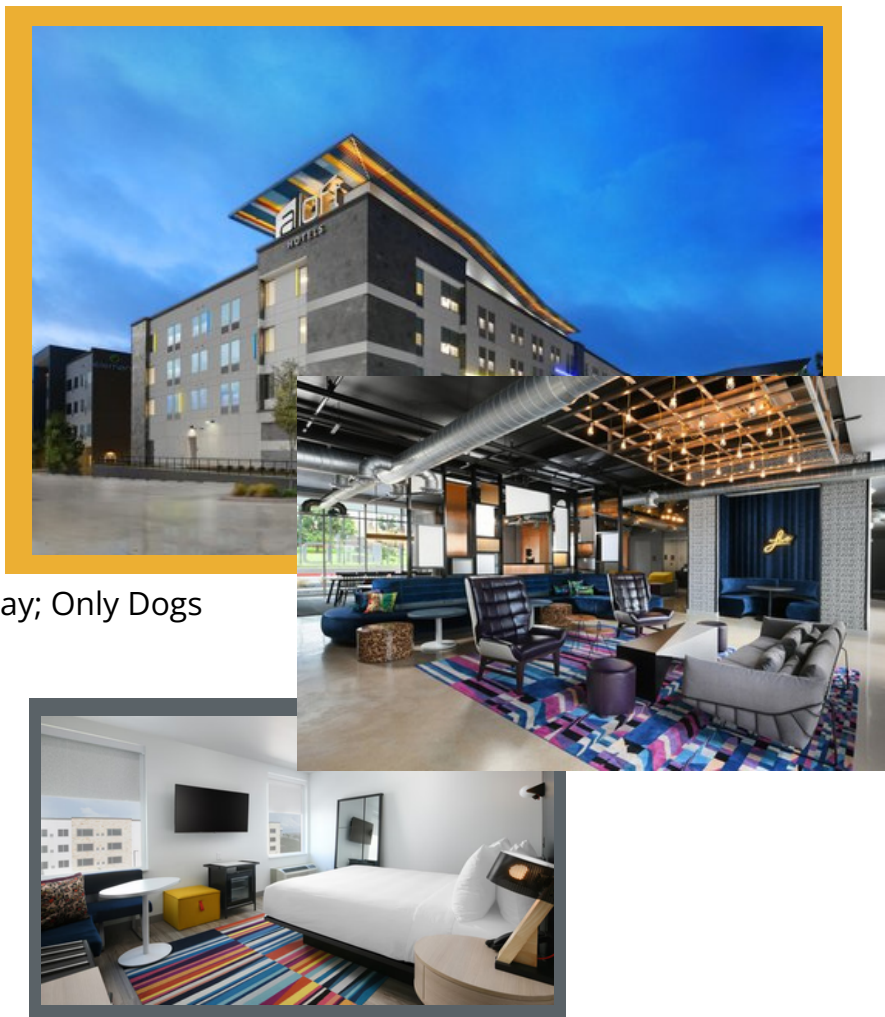
Non-Refundable Pet Fee Per Night: \$50

Maximum Pet Weight: 40lbs

Maximum Number of Pets in Room: 2

PARKING

Free on-site parking



HOTEL GUIDEBOOK

ELEMENT AUSTIN ROUND ROCK

1770 Warner Ranch Dr
Round Rock, Texas, 78664
(512)218-4100

4.7 miles to
Kalahari

Studio King Suite: \$114.00/night

Studio Double Queen Suite: \$121.00/night

Discover a new way to unwind, recharge, and connect with the world around you at Element Austin Round Rock. Energize with our Motion Fit center or Bikes to Borrow program then recharge on the patio of our outdoor bromine pool. We provide wholesome, healthy food each morning with our Rise **Complimentary Breakfast**, snacks are available in the Restore Pantry, local beer and wine, and charcuterie during our complimentary Relax Evening Social (Mon-Thurs 5pm-6:30PM.) Our airy guest rooms offer more space to live your life with fully-equipped kitchens with an in-room filtered water faucet, signature Westin Heavenly Bed®, large 55" screen smart TV's, endless natural light, and more.

Hotel Policies

CHECK IN 3:00 p.m.

CHECK OUT 12:00 p.m.

SMOKING POLICY

This is a non-smoking hotel

PET POLICY

Pets Welcome

Nightly fee WILL NOT exceed \$150 per stay; Only Dogs Accepted; 40 pound max

Non-Refundable Pet Fee Per Night: \$50

Maximum Pet Weight: 40lbs

Maximum Number of Pets in Room: 2

PARKING

Free on-site parking

