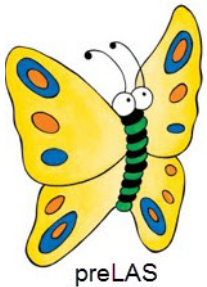




# LAS Battery of Assessments Program Update

3-5-2021



# ● ● ● Preparing for Kindergarten Orientation



- *preLAS* and *preLAS* Online **may be used** during the Spring 2021 Kindergarten Orientation for the purpose of English learner identification
- *preLAS* remote testing options are provided in the Remote Testing section of our Texas website: [www.LASLinks.com/Texas](http://www.LASLinks.com/Texas)
- DRC will provide test administrators 3 opportunities for training in March:
  - Training will be conducted as statewide webinars via Zoom
  - Registration links for training will be included in the March 9<sup>th</sup> Texas Tuesday newsletter
  - Webinars will be recorded and posted to the Professional Development section of the website
  - Certificates for attendance will not be provided as Test Administrators are able to obtain certificates via DRC's Professional Learning portal

## ■ Training schedule:

TOPIC	DATE	TIME	FOCUS
<i>preLAS</i> Online	March 17, 2021	9:00-11:00am	<i>preLAS</i> <b>Online</b> administration 500 max capacity
<i>preLAS</i> Paper	March 17, 2021	2:00 – 4:00pm	<i>preLAS</i> <b>Paper</b> administration 500 max capacity
<i>preLAS</i> Online	March 24, 2021	2:00 – 4:00pm	<i>preLAS</i> <b>Online</b> administration 500 max capacity

## ● ● ● Remote and Reclassification Updates



- Remote testing guidance may be found in the Remote Testing section of our website [www.LASLinks.com/Texas](http://www.LASLinks.com/Texas)
- **Identification:** Remote testing with preLAS and LAS Links Online continues to be available for the purpose of English learner identification
- **Reclassification:** Will follow all the same processes and protocols as Reclassification last school year with the exception that Reclassification testing with LAS Links is only available via remote testing
  - Program specifics will be provided in the March 9<sup>th</sup> Texas Tuesday newsletter including:
    - LAS Links Online Form B will be utilized for the purpose of Reclassification testing.
    - DRC will post an updated 2021 Reclassification Order form to the website.
    - DRC scoring services are an option to all LEAs. Pricing will be included on the Reclassification order form.
    - LEAs will be able to transfer already purchased licenses from their ID account to their Reclass account.
    - DRC will transfer unused Reclass licenses back to your ID account at the end of the Reclass window as determined by the TEA.

## ● ● ● Remote and Reclassification Key Dates



Date	Topic
3/9/2021	Texas Tuesday newsletter to provide detailed LAS Links Online Remote and Reclassification program information
March 2021	DRC will repost Reclassification guidance on the website
5/17/2021	All Reclass accounts will be reactivated in the INSIGHT Portal <ul style="list-style-type: none"> <li>• No action required by LEAs for reactivation</li> <li>• LEAs may begin adding additional Users as needed</li> <li>• LEAs may begin registering students in anticipation of testing those students remotely after May 28<sup>th</sup>, 2021</li> </ul>
5/28/2021	TELPAS window closes
5/29/2021	LAS Links Online remote testing for the purpose of Reclassification may begin <ul style="list-style-type: none"> <li>• Portal will allow LEAs to create test sessions and test students</li> </ul>
TBD	DRC will provide statewide virtual training on Remote/Reclassification training. Dates and registration links will be provided once dates have been finalized.

# Preparing for 2021-22: Statewide Webinar Training Schedule



- DRC will provide test administrators several opportunities for training prior to the start of the school year:
  - Training will be conducted as statewide webinars via Zoom
  - Registration links for training will be included in the March 9<sup>th</sup> Texas Tuesday newsletter
  - Webinars will be recorded and posted to the Professional Development section of the website
  - Certificates for attendance will not be provided as Test Administrators are able to obtain certificates via DRC's Professional Learning portal

## ■ Training schedule:


TOPIC	DATE	TIME	FOCUS
preLAS Online	July 27, 2021	9:00 - 11:00am	preLAS <b>Online</b> administration 500 max capacity
LAS Links Online	July 27, 2021	2:00 – 4:00pm	LAS Links <b>Online</b> administration 500 max capacity
preLAS Paper	July 28, 2021	9:00 – 11:00am	preLAS <b>Paper</b> administration 500 max capacity
LAS Links Paper	July 28, 2021	2:00 – 4:00pm	LAS Links <b>Paper</b> administration 500 max capacity
preLAS Online	Aug 10, 2021	9:00 - 11:00am	preLAS <b>Online</b> administration 500 max capacity
LAS Links Online	Aug 10, 2021	2:00 – 4:00pm	LAS Links <b>Online</b> administration 500 max capacity
preLAS Paper	Aug 12, 2021	9:00 – 11:00am	preLAS <b>Paper</b> administration 500 max capacity
LAS Links Paper	Aug 12, 2021	2:00 – 4:00pm	LAS Links <b>Paper</b> administration 500 max capacity

# ● ● ● FAQs Update



## The FAQs are getting a makeover!

Soon the FAQs will be easier to navigate so you can more readily find the answer(s) you are looking for. The FAQ option on the website will allow you to click on the topic of interest which then provides you with the questions and answers for that particular topic.



### Contract Details

Data Recognition Corporation (DRC) has been selected by the Texas Education Agency to provide Texas LEAs the LAS Battery of Assessments as the Statewide Language Proficiency Test for English Learner Identification.

DRC's LAS Battery of Assessments offers testing mode flexibility (paper and online), and robust Professional Development offerings (onsite training at ESCs, live and recorded webinars, 24/7 access to a learning management system) at no additional cost to LEAs. All LEAs will enjoy discounted pricing across the entire suite of LAS assessments for the duration of the contract (August 2020 - August 2022).

**Testing Window(s)**

- Year Round Testing

**Testing Form(s) Approved for Identification:**

- preK3- Kindergarten: preLAS English Form C; preLAS Español Form C\*
- Grade 1: LAS Links English Form A (speaking+listening only); Español Form A (hablando + escuchando)\*
- Grades 2-12: LAS Links Form A (speaking+listening+reading+writing); Español Form A (hablando + escuchando)\*

\*Spanish to be assessed only if your LEA has a bilingual program in grades preK3-6.

**Report(s) Available:**

- On-Demand and Batch Download
- SDF (Student Data File) - Available for purchase
- Interactive Reports (LAS Links Online only) - Available for purchase

<a href="#">Identification</a>	▼	<a href="#">Reclassification</a>
<a href="#">preLAS</a>	▼	<a href="#">LAS Links</a>
<a href="#">Progress Monitoring</a>	▼	<a href="#">Remote Testing</a>

## preLAS FAQ's

---

- [What ages can be assessed with preLAS?](#)
- [Which preLAS form do I use for identification?](#)
- [Which preLAS form do I use for remote testing?](#)
- [How are students assessed?](#)
- [Which domains are assessed with preLAS?](#)
- [Are the professional learning modules for LAS Battery of Assessment required?](#)
- [Are there other trainings/webinars available?](#)
- [What are the advantages of preLAS online?](#)
- [What materials are needed for preLAS online?](#)
- [What materials are needed for preLAS paper assessments?](#)
- [How is preLAS preliteracy component administered online?](#)
- [Can I use preLAS and preLAS Español at the end of the year for progress monitoring?](#)
- [When will assessment reports be available after the assessment has been administered?](#)
- [How long does it take to administer preLAS?](#)
- [Where can I go to answer assessment administration questions?](#)
- [What can I do prior to calling technical support when an operational question arises?](#)
- [How do we move from paper assessment materials to online?](#)
- [Do we need to retrain our users if we are moving from paper assessment materials to preLAS online?](#)
- [How do we interpret student reports and how does it correlate to TELPAS proficiency levels and descriptors?](#)
- [Which reports are available with preLAS online?](#)

Please continue to utilize the current FAQs on our website until our new and improved FAQs are made available soon!

## ● ● ● Support



Dedicated website: [www.laslinks.com/Texas](http://www.laslinks.com/Texas)

Dedicated Texas Customer Support:

Phone: 833-867-5679 Option 2

Email: [LASTechTX@datarecognitioncorp.com](mailto:LASTechTX@datarecognitioncorp.com)

Field Representatives:

Jennifer Milliner	Stephany Barber
Regions: 5, 6, 7, 8, 9, 10, 11, 12, 13, 14, 16, 17	Regions: 1, 2, 3, 4, 15, 18, 19, 20
Email: <a href="mailto:JMilliner@datarecognitioncorp.com">JMilliner@datarecognitioncorp.com</a>	Email: <a href="mailto:SBarber@datarecognitioncorp.com">SBarber@datarecognitioncorp.com</a>
Phone: 317-469-1107	Phone: 763-553-4331

# Statewide Academic Achievement Test for English Learner Reclassification Grades 1, 2, 11, and 12





# English Learner Reclassification: Overview



- Riverside Insights is the approved provider for the State Standardized Achievement Test for English Learner Reclassification.
- Grades 1, 2, 11 and 12.
- *Iowa Assessments, Form F*



# English Learner Reclassification: Implementation Process



[https://info.riversideinsights.com/texas\\_elreclassification](https://info.riversideinsights.com/texas_elreclassification)



# English Learner Reclassification: Ordering

- Online Administration
  - Testing License
- Paper Administration Hand Scoring
  - Test books
  - Answer document (grades 11 & 12 only)
  - Scoring Key
  - Norm and Score Conversion Guide
  - Score Interpretation Guide (optional)
- Texas Reclassification Training Academy (TXRTA)
  - Seat(s) or group

Online Testing Order Form

Paper Testing Order Form



# English Learner Reclassification: Texas Reclassification Training Academy (TXRTA)

## Online Administration

Account Holder and Data Contact

1. Technical Readiness
2. Introductory and Data Set-Up

Account Holder and Test Administrators

3. DataManager Set-Up and Test Administration
4. Proctor Training
5. Remote Testing (if applicable)

## Paper Administration

Trainer and Test Administrators

1. Paper Administration Hand Scoring

## Office Hours

- Twice a week
- Attend after trainings for additional assistance

[https://info.riversideinsights.com/texas\\_elreclassification](https://info.riversideinsights.com/texas_elreclassification)



# English Learner Reclassification: FAQ's

1. Will Iowa be used for Reclassification this year? **YES**
2. Is Remote testing available? **YES**
3. Will trainings be offered at the ESC? **NO**
4. How do I access the TXRTA? **Purchase required number of seats or group**
5. Can I use the materials/licenses purchased in 2020 for testing this year? **YES**
6. Is there a deadline for placing an order? **NO**



## Questions?

- Visit our website: [https://info.riversideinsights.com/texas\\_elreclassification](https://info.riversideinsights.com/texas_elreclassification)
- Jessica Petter, Project Manager: [jessica.petter@riversideinsights.com](mailto:jessica.petter@riversideinsights.com)